

How the Fall Product Program Works

The Fall Product Program allows girls to be entrepreneurs by offering family and friends the opportunity to purchase delicious nuts, savory chocolates, and a wide variety of magazines.

Girls can elect to participate in person by using the nut order card and collecting payments. Girls can also choose to participate online by inviting family and friends to place an order. Customers are able to choose to have items shipped directly to them, or they can choose to have nut and chocolate products delivered by the Girl Scout.

GIRLS & TROOPS CAN EARN AWESOME REWARDS!

There's something for everybody, including patches, t-shirts, the popular mascot plush animals, and lots of trendy things that girls really love! You can challenge her online skills through our online-only rewards, or teach her the value of giving back to her community by collecting money for Care to Share donations.



The 2022 Fall Product Program runs from September 30—October 30, 2022.



CHECK IT OUT!

Using your mobile device, scan the QR code below to access our newly designed Fall Product web page!



OR go to GSNIM.org and click the Cookies+ Tab

Welcome to the 2022 Fall Product Program!

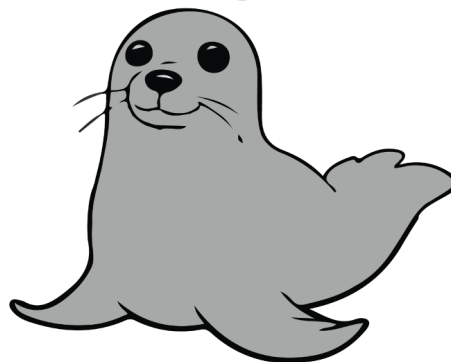
We hope that you and your Girl Scout are excited about the upcoming Fall Product Program. Not only will she help her troop fund their Girl Scout experiences, but she will learn vital financial literacy and marketing skills. With safety as our top priority, we have several flexible participation options so that your girl can choose the option that works best for you. As always, we thank you for your support!

Girl/Guardian Checklist

- ☐ Go online and fill out the [Product Program Permission Form](#) for the 2022-23 year.
- ☐ Set up your login and avatar on the [M2 website](#).
- ☐ Pick up order card, money envelope, and reward flyer from your troop leader.
- ☐ Begin your sale on September 30!
- ☐ Any girl who has uploaded a promotional video to her M2 landing page will be entered in a drawing to win the giant stuffed seal!
- ☐ Check with your troop leader about expectations for turning in order cards and money.
**Remember, this is a pre-paid program. Be sure to collect payment at the time of the order.
- ☐ Finish taking online orders and payments no later than Oct. 30.
- ☐ Turn in money to troop leader no later than Oct. 31.
- ☐ Make sure that all girl rewards are selected by Nov. 1
- ☐ Discuss with troop leader the product & reward pickup expectations.

FALL PRODUCT PROGRAM

GO
BRIGHT
Ahead



GET STARTED NOW!

Fall back into Girl Scouts with the Fall Product Program!

Girls learn all aspects of running an online business by using the M2 platform. M2 makes the experience girl friendly with an easy-to-navigate dashboard where they can create a video, set their goals, create messages for their customers, and the most popular feature, create their own avatar – which girls love!



Ways to Participate

Online

Girls are encouraged to send emails out to friends and family. Online your customers will be able to choose between many Magazine and Nut & Candy options.

Magazines:

Customers can order magazines through the online site and pay via credit card. Magazine subscriptions can be new or renewals, and digital magazine subscriptions are also available. Subscriptions start at \$10.00 for some titles.

Nuts & Candy

-Your customer may choose “**girl delivery**” to order product and digitally pay for the items that are available for purchase on the order card. Girl Delivered Items will be delivered to the Service Unit with the items that are ordered through the order card in November and you will be responsible to deliver the product to the customer. **The benefits of the online option are that your customer does not pay shipping fees and you do not need to collect payment because it has been paid online.**

-Your customer also has the choice to pay for shipping and have items shipped directly to them. The benefits of this option are they can select from all of items that Ashdon Farms carries (more items than what are on the order card) and items ship quickly.

Nut Store Shipping reminders:

Shipping costs vary based on the total retail amount purchased.

Standard shipping will take 5 or less business days depending on customer's shipping address.

Expedited shipping (2 day) will be recommended (not required) for orders containing chocolate items.



In Person

Nut and Candy Order Card: Girls will ask friends and family if they would like to support their troop by purchasing a nut or candy item. If yes, girls will fill out the nut & candy order card with contact information and quantities of items and collect payment. Product delivery is handled by the girl/parent at the end of November.

**Remember - all
orders must be
accompanied by
money!**





Hi!

Our friendly customer service representatives are ready and waiting to answer all of your Fall Product Program questions!

support.gsnutsandmags.com

(800)-372-8520

We're happy to help!

2022 Product Lineup

<i>Mint Treasures—Girl Scout Memory Tin.....</i>	\$11
<i>Deluxe Pecan Clusters—Holiday Tin.....</i>	\$11
<i>Honey Roasted Mixed Nuts</i>	\$10
<i>Whole Cashews w/ Sea Salt</i>	\$8
<i>Dark Chocolate Peppermint Pretzels.....</i>	\$8
<i>Deluxe Pecan Clusters</i>	\$8
<i>English Butter Toffee</i>	\$8
<i>Dark Choc. Caramel Caps w/ Sea Salt</i>	\$8
<i>Caramel Apples.....</i>	\$8
<i>Peanut Butter Trail Mix.....</i>	\$8
<i>Sweet & Salty Mix.....</i>	\$8
<i>Chocolate Covered Raisins</i>	\$7
<i>Peanut Butter Bears.....</i>	\$7
<i>Dulce de Leche Owls.....</i>	\$7
<i>Hot Cajun Crunch.....</i>	\$7
<i>Fruit Slices.....</i>	\$6
<i>Care to Share Donation.....</i>	\$6

M2 Website Trainings:

GSNI-M is happy to offer several tutorial videos to assist with navigating the M2 site. These are available at gsnutsandmags.com or at the link below.

Scan or click the QR code to view the training videos:



Care to Share Donations

With “Care to Share”, GSNI-M will distribute a container of snacks to military and public servant partners. If a customer would like to donate a can of snacks, girls will collect the \$6 payment and mark their order card accordingly. Care to Share donations may be also be made online (great for out of town friends and family)! Care to Share rewards are based on the combined total amount donated on both the order card and via online donations.



Girl Rewards

\$100 in total sales

Theme Necklace



\$200 in total sales

Seal Charm & Bracelet



\$300 in total sales

Small Plush



\$400 in total sales

Diamond Art Sticker Craft



\$500 in total sales

Go Bright Ahead T-Shirt & Scrunchie



\$600 in total sales

Large Plush



\$700 in total sales

Self-Care Set: Gel Eye Mask & Journals



\$800 in total sales

LED Strip Lights



\$1000 in total sales

Go Bright Ahead Beach Towel OR Themed Hoodie



**All patches and rewards are cumulative*

Girl Rewards

Go Bright Ahead Patch

*Earned by selling
12+ Nut/Candy
Items*



Super Seller Patch

*Earned by selling
40+ Nut/Candy
Items*



Swimming Seal Patch

*Earned by selling
3+ magazines*



2022 Patch

*Earned by sending
18+ emails*



Super Seller Mags Patch

*Earned by selling
5+ magazines*



Care to Share Patch

*Earned by selling 5+ Care
to Share donations*



**Every Girl Scout has
the opportunity to win
the Giant Hawaiian
Monk Seal!**

Earn entries by:

*One Entry: Upload a sales
video to the M2*

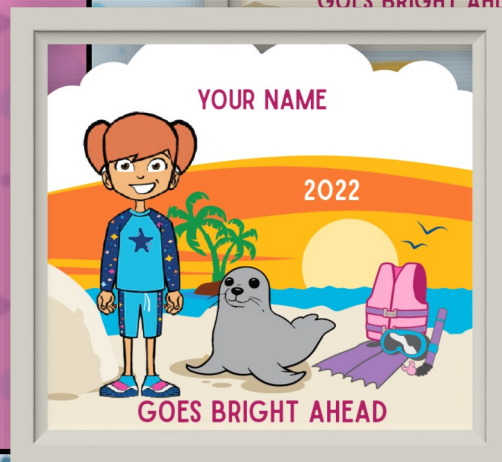
*One Entry: Have at least 1
online*

*One Entry: For every \$100
in sales (combined order
card and online)*

Girl Personalized Patch

*Girls can earn their custom,
personalized patch! To earn
it, girls must meet all of the
requirements below:*

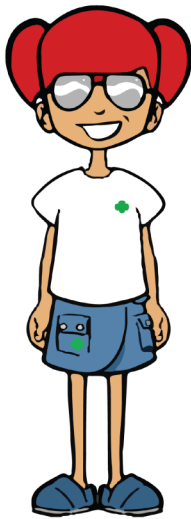
- \$300 + in total sales
- 18+ emails sent
- Create their own
avatar online
- Share their seller
link and have at
least one sale from
that link.



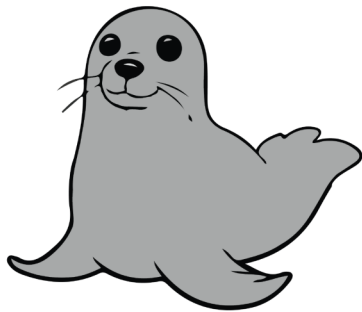
**All patches and rewards are cumulative*



CREATE YOUR AVATAR AND PARTICIPATE IN
THE FALL PRODUCT PROGRAM!



GO
BRIGHT
Ahead



Safety Measures

Safety is our number one priority. During the cookie program, safety measures must be increased. Click or scan the QR code to find the most recent guidance from GSUSA about how to keep all girls safe this cookie season. Before participating in any money-earning activity, it's super important for Girl Scouts and adults to review the following materials:

- [Digital Marketing Tips for Cookie Entrepreneurs and Families \(PDF\)](#)
- [Safety Tips for Product Sales \(PDF\)](#)

Scan or click the QR code to view GSUSA's Safety Resources:



Health Guidelines

Girls and volunteers are **not** required to participate in any activity. It is the sole discretion of each individual family and their comfort level with the planned activity whether to participate or not.

Troops need to follow state and local health guidelines anytime they are gathering. Please refer to the Center for Disease Control (CDC) for the latest information.



CONGRATULATIONS on a successful 2022-2023 Girl Scout Product Program! Nutty Bucks/Cookie Dough can be used at your nearest GSNI-M Service Center or Council Store. Please take special note of the following guidelines in preparation of redeeming your Nutty Bucks/Cookie Dough. Feel free to contact us if you have any questions at 800-283-4812, option 2 or at frontdesk@gsnim.org.

NUTTY BUCKS & COOKIE DOUGH GUIDELINES

Expires: September 15, 2023

Nutty Bucks/Cookie Dough may only be redeemed by the recipient and/or the recipient's parent/guardian. It is not intended for troop use. Parents may submit written authorization for a third party to use the Nutty Bucks/Cookie Dough on their daughters' behalf.

- Nutty Bucks/Cookie Dough may ONLY be redeemed through the Girl Scouts of Northern Indiana-Michiana (GSNI-M) Council.
- Nutty Bucks/Cookie Dough cannot be redeemed for cash.
- GSNI-M will accept Nutty Bucks/Cookie Dough for the following:
 - Girl Scout Membership Renewal for Girl Members Only
 - **(NOT VALID UNTIL AFTER APRIL 1, 2023)**
 - Simply contact us by phone or submit your request to use your Nutty Bucks/Cookie Dough towards the \$35 Girl Membership Registration Fee for 2023-2024 online by visiting [Request to Use for Membership Form](#). Please include the following information in your request: Girl's Name, Troop Number, Girl's Date of Birth, Grade level for Fall 2023 and current mailing address and email address. We will process your request and finish your membership renewal! Please remember that Nutty Bucks/Cookie Dough can only be used to renew GIRL memberships.
 - Merchandise purchased at any GSNI-M Council Store location including the Traveling Store and Camp Trading Posts.
 - Apply towards fees for GSNI-M Camp programs. Please visit www.gsnim.org for Summer Camp availability.
 - Apply towards fees for GSNI-M sponsored girl activities/events.
 - GSUSA travel opportunities. GSNI-M will write a check directly to the sponsoring organization after girl's proof of admittance is provided. Please visit <http://forgirls.girlscouts.org/travel/> for travel opportunities.
 - Nutty Bucks/Cookie Dough may be converted for use on the girlscoutshop.com website. You must email frontdesk@gsnim.org with your request NO LATER THAN Aug. 15, 2023.
- GSNI-M cannot accept Nutty Bucks/Cookie Dough for the following:
 - Purchase of GSNI-M Gift Cards
- Nutty Bucks will be accepted through the mail, by phone or in person; however it MUST be redeemed by the expiration date of September 15, 2023.
 - To check the balance of your card, feel free to contact us toll-free 800-283-4812, option 2 for the Answer Center.



Contact us:
Toll-free: 1-800-283-4812 Option 2
Email: frontdesk@gsnim.org

Key Dates 2022-2023



Early September: Renew your Girl Scout Membership for the 2022-23 Year and complete the Girl Permission Slip for each girl in the household (one form is good for both Fall Product 2022 and Cookie 2023)

Sept 30: Fall Product Program Launch Date! Girls/guardians will receive an email inviting them to register at gsnutsandmags.org and girls can begin taking orders.

Oct 28: Discuss with your troop leader the expectations for submitting forms, money, and reward choices.

Oct 30: Sale ends. Customers lose access for placing online orders at midnight. Girls may no longer take orders and **no online payments can be made after this date.**

Oct. 31: Last day for girl/caregivers to enter their own order cards and reward selections on the website. Money is due to the troop leader.

Mid-November: Products begin delivering to Service Units. Troops will be notified when their product is ready for pick up.



Dec. 2022/Jan. 2023: ETA for reward delivery to Service Units. GSNI-M and Service Units will communicate with everyone when we have updates on the delivery status and pickup availability.

Sep. 15, 2023: All Nutty Bucks expire.

